

PRODUCT DATA SHEET

N-Hexadecanoyl-ceramide trihexoside

Catalog number: 1528

Synonyms: N-C16:0-Ceramide trihexoside;
N-Hexadecanoyl
globotriaosylceramide

Source: semisynthetic, porcine RBCs

Solubility: DMSO, hot methanol,
chloroform/methanol, 2:1

CAS number: 137896-85-6

Molecular Formula: C₅₂H₉₇NO₁₈

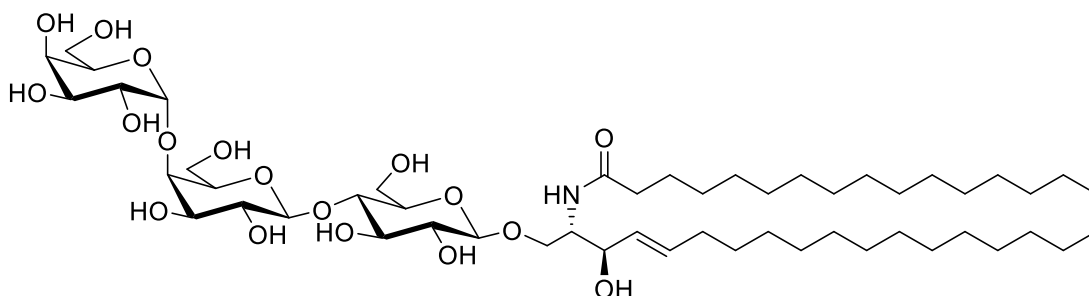
Molecular Weight: 1024

Storage: -20°C

Purity: TLC: >98%; HPLC: >98%; identity
confirmed by MS

TLC System: chloroform/methanol/DI water
(65:25:3 by vol.)

Appearance: solid



Application Notes:

This product is a well-defined ceramide trihexoside containing a hexadecanoic acid acylated to the ceramide moiety making it ideal as an internal standard and for biological studies.¹ Ceramide trihexoside (CTH or Gb3) is a glycosphingolipid found mostly in mammalian cell membranes. It is involved in cellular signaling and has been identified as a receptor for various toxins including shiga toxins and shiga-like toxins.² Some toxins, such as verotoxins from *Escherichia coli*, require specific fatty acids on the ceramide portion of CTH to show affinity in binding. An accumulation of CTH in the cellular membranes due to a lack of *alpha*-galactosidase to convert it into lactosyl ceramide results in Fabry disease.³ This product can be used as an excellent standard for the identification of CTH in Fabry disease by HPLC⁴ and mass spectrometry. An inability to convert CTH to globoside due to mutations in the gene sequence leads to the P^k blood group phenotype. It appears that under certain conditions CTH can enhance anticoagulant activity. CTH has also been studied as a tool to investigate lymphocyte activation.⁵

Selected References:

1. M. Fuller et al. "Urinary Lipid Profiling for the Identification of Fabry Hemizygotas and Heterozygotas" *Clinical Chemistry*, Vol. 51 pp. 688-694, 2005
2. S. Ashkenazi and T. G. Cleary, "Rapid method to detect shiga toxin and shiga-like toxin I based on binding to globotriaosyl ceramide (Gb3), their natural receptor." *J Clin Microbio*. June; 27(6): 1145-1150, 1989
3. S. Bekri, O. Lidove, R. Jaussaud, B. Knebelmann, F. Barbey. "The role of ceramide trihexoside (globotriaosylceramide) in the diagnosis and follow-up of the efficacy of treatment of Fabry disease: a review of the literature". *Cardiovasc Hematol Agents Med Chem* 4 (4): 289-97, October 2006
4. J. E. Groener, B. J. Poorthuis, S. Kuiper, M. T. Helmond, C. E. Hollak, J. M. Aerts. "HPLC for simultaneous quantification of total ceramide, glucosylceramide, and ceramide trihexoside concentrations in plasma." *Clin Chem.*, Apr;53(4):742-7, 2007. Epub Mar 1 2007
5. C. Menge, I. Stamm, M. Wuhler, R. Geyer, L. H. Wieler, G. Baljer. "Globotriaosylceramide (Gb(3)/CD77) is synthesized and surface expressed by bovine lymphocytes upon activation in vitro." *Vet Immunol Immunopathol.*, Nov;83(1-2):19-36, 2001

This product is to be used for research only. It is not intended for drug or diagnostic use, human consumption or to be used in food or food additives. Matreya assumes no liability for any use of this product by the end user. We believe the information, offered in good faith, is accurate.